

20,000 Homes Registry Week

City of Kawartha Lakes and County of Haliburton
Northumberland County

Kerri Kightley

Four Counties Addiction Services Team



City of Kawartha Lakes and County of Haliburton Registry Week August 22 – 24, 2016



Because a couch is not a home...



County of Haliburton

Registry Week



Because a couch is not a home...



- Approximately 40 volunteers and professional staff surveyed people without permanent homes using the VI-SPDAT tool from August 22-24 at agencies, food banks, libraries and parks across the City and the County
- Public awareness completed simultaneously
- Participation was voluntary
- Participants received a \$5 Tim Horton's gift card to thank them for their time



County of Haliburton

Results Overview



Because a couch is not a home...



- 138 interactions
- 112 individuals surveyed
 - 17 in shelters
 - 6 unsheltered
 - 47 Couch surfing or without permanent residence of their own
 - 42 indicated other accommodations, i.e. Rooming House (14), trailer (3), motel (4), hospital ...
- 78 in Lindsay, 8 in balance of CKL
- 26 in the County



County of Haliburton

Community Partners



Because a couch is not a home...



- City of Kawartha Lakes
- County of Haliburton
- A Place Called Home
- John Howard Society
- Canadian Mental Health Association
- Boy's & Girl's Club
- Haliburton Heat Bank
- Haliburton Highlands Mental Health
- Salvation Army
- YWCA
- Community Solutions
- Community Living



County of Haliburton

Northumberland County Registry Week

November 14 - 18,

2016

**A home for
everyone
is key.**



Registry Week



- Approximately 85 volunteers and professional staff surveyed people experiencing homelessness and at risk of homelessness using the VI-SPDAT tool from November 14-18 at agencies, food banks, libraries and meal programs across the County
- Public awareness completed simultaneously
- Participation was voluntary
- Participants received a \$10 gift card to thank them for their time

Results Overview



- We surveyed 304 unique individuals and families
- Homeless:
 - 59 Individuals
 - 18 families – including 26 children
- At-Risk of Homelessness
 - 179 Individuals
 - 48 families – including 68 children

Location of Surveys



Place	Single Homeless	Family Homeless	Single At-Risk	Family At-Risk	Total
Cobourg	44	13	114	26	197
Port Hope	6	0	52	10	68
County	9	5	13	12	46

Community Partners



- County of Northumberland
- Social Services
- Transition House Shelter
- Cornerstone Family Violence Prevention Centre
- Northumberland Hills Hospital Mental Health Services
- Green Wood Coalition
- HKPR District Health Unit
- Brighton Community Centre
- Port Hope Community Health Centre
- Salvation Army
- Alderville First Nation
- Cobourg Police
- Community Care
- Habitat for Humanity
- Northumberland United Way
- St. Peters Church

Why 20K Homes?

- Peterborough PiT Count
- 20K Homes – power of a National movement
- Week long process – allowed for more coverage across rural/urban area
- Communities wanted person specific data
- Community partners wanted a firm commitment on HOW the process would affect homeless people
- Power of the By-Name List

20K Advisory Groups

City of Kawartha Lakes, County of Haliburton	Northumberland County
A Place Called Home (Emergency Shelter)	Transition House and Cornerstone (Emergency and VAW Shelters)
Fourcast (Addictions)	Fourcast (Addictions)
City/County (Social Services)	County (Social Services + Council Champion)
John Howard Society	Green Wood Coalition, Mental Health Services, Salvation Army (Outreach)
Canadian Mental Health Association, Haliburton Mental Health Services (Mental Health)	Cobourg Police
	Faith Groups, Public Health, United Way, Community Health Centre, LHIN

Definition of Homeless ...

- **Unsheltered**
 - People living in public or private spaces without consent or contract
 - People living in places not intended for permanent human habitation
- **Emergency Sheltered**
 - Emergency overnight shelters for people who are homeless
 - Shelters for individuals/families impacted by family violence
 - Emergency shelters for people fleeing natural disaster (fire, floods etc)
- **Provisionally Accommodated**
 - Interim housing for people who are homeless
 - People living temporarily with others, but without guarantee of continued residency
- **At-Risk of Homelessness (Northumberland only)**
 - People at imminent risk of homelessness
 - Individuals and families who are precariously housed

Survey Tools

- **VI-SPDAT**
 - Additional Questions:
 - Demographic (Age, gender)
 - Veteran, Foster Care, Indigenous
 - Income Source
 - Location in last 12 months?
- **Prev-SPDAT (Northumberland)**
 - Gain understanding of precarious Housing
 - Less than 10% scored with high acuity
 - Caused improvement and investment in homelessness prevention supports

Registry Week Details

- **Locations:**
 - 40+ locations in each county
 - Public events
 - Libraries, Food Programs, Community Agencies
 - Shelters
 - Police Outreach
 - Community Agency People finding
 - 1-800 #
- **Headquarters**
 - County Building
 - Mobile check in and out process
 - Debrief by phone
- **Budget and Supplies**
 - CKL - \$35,000 + supplies
 - Northumberland \$40,000 +supplies

Community Debrief

- **CKL-H**
 - Friday, August 25th
 - Coboconk Community Centre
 - Final report October 2016
- **Northumberland County**
 - Tuesday, November 22nd
 - Cobourg Lions Community Centre
 - Final report February 2017

Lessons Learned

- **Power of the By-Name List and what action it propels forward**
- **CKL-H**
 - Need more prep for new community partners on the SPDAT and how it will be used in future.
 - Community Libraries
 - Outdoor events – build awareness and connect with people experiencing homelessness
 - Need a clear follow up plan
- **Northumberland County**
 - 1-800 number
 - More training/communication on consent
 - More communication needed on the next steps
 - More focus needed on landlord, supports and resources to make the commitment to house the most vulnerable possible

Contacts

Kerri Kightley

Four Counties Addiction Services Team

p. 705.876.1292 ext.243

m. 705.768.5887

e. kakightley@fourcast.ca

City of Kawartha Lakes, County of Haliburton

Michelle Corley

e. mcorley@kawarthalakes.ca

- **Northumberland County**

Julie Kennedy

e. kennedyj@northumberlandcounty.ca



Hospital

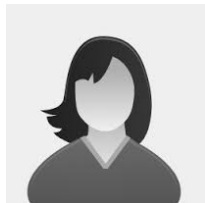


Shelter



Housing
Resource

VAW
Programs



CAS

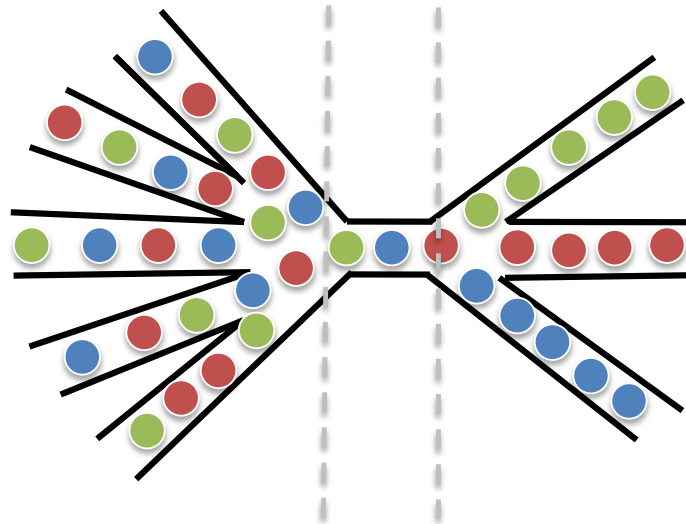
Police



Mental
Health

20K
Homes or
PiT
Counts

Homelessness Coordinated Entry & Response



Assess
(VI-SPDAT)

Navigate

**Connect with
housing &
supports**

By Name List
(Organized by Acuity
using VI-SPDAT)

Resources
(Matched to Acuity)

14-17

8-13

5-7

0-4

H
C
R
T

Housing
First

Mental
Health
Housing

Rent
Supp/
Short
term

Low
Touch

All individuals and families experiencing homelessness are screened with the Vulnerability Index–Service Prioritizations Decision Assistance Tool (VI-SPDAT) and directed toward appropriate resources and supports for housing stabilization.



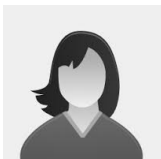
Hospital



Shelter



Housing
Resource



John
Howard



CAS



Police

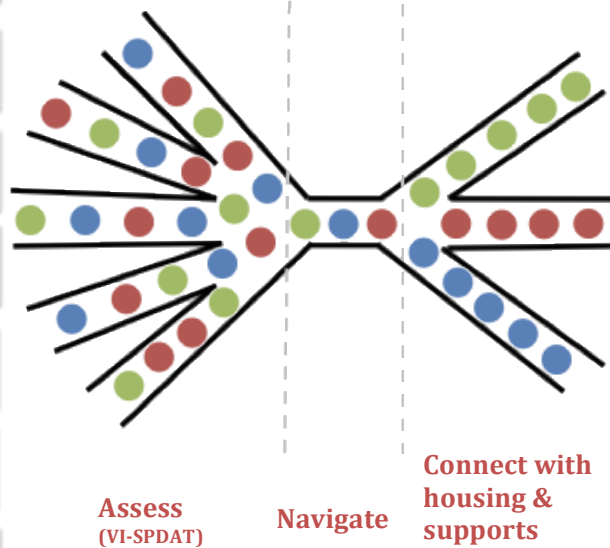
Mental
Health

Income
Supports

Situation
Table

Registry
Week

Homelessness Coordinated Entry & Response



Assess
(VI-SPDAT)

Navigate

Connect with
housing &
supports

By Name List (Organized by Acuity)

14-17
(50-60)

8-13
(35-50)

5-7
(20-34)

0-4
(0-19)

H
C
R
T

Resources (Matched to Acuity)

H
P
S

HN/
ASH

MH

Rent
Supp/
Short
term

Low
Touch

General

8 HN
32 ASH
8 HFG

HPS 20

25% of
Rent
Sups

Ret.
Supports

Youth

HF4Y
(YES/4Cast)

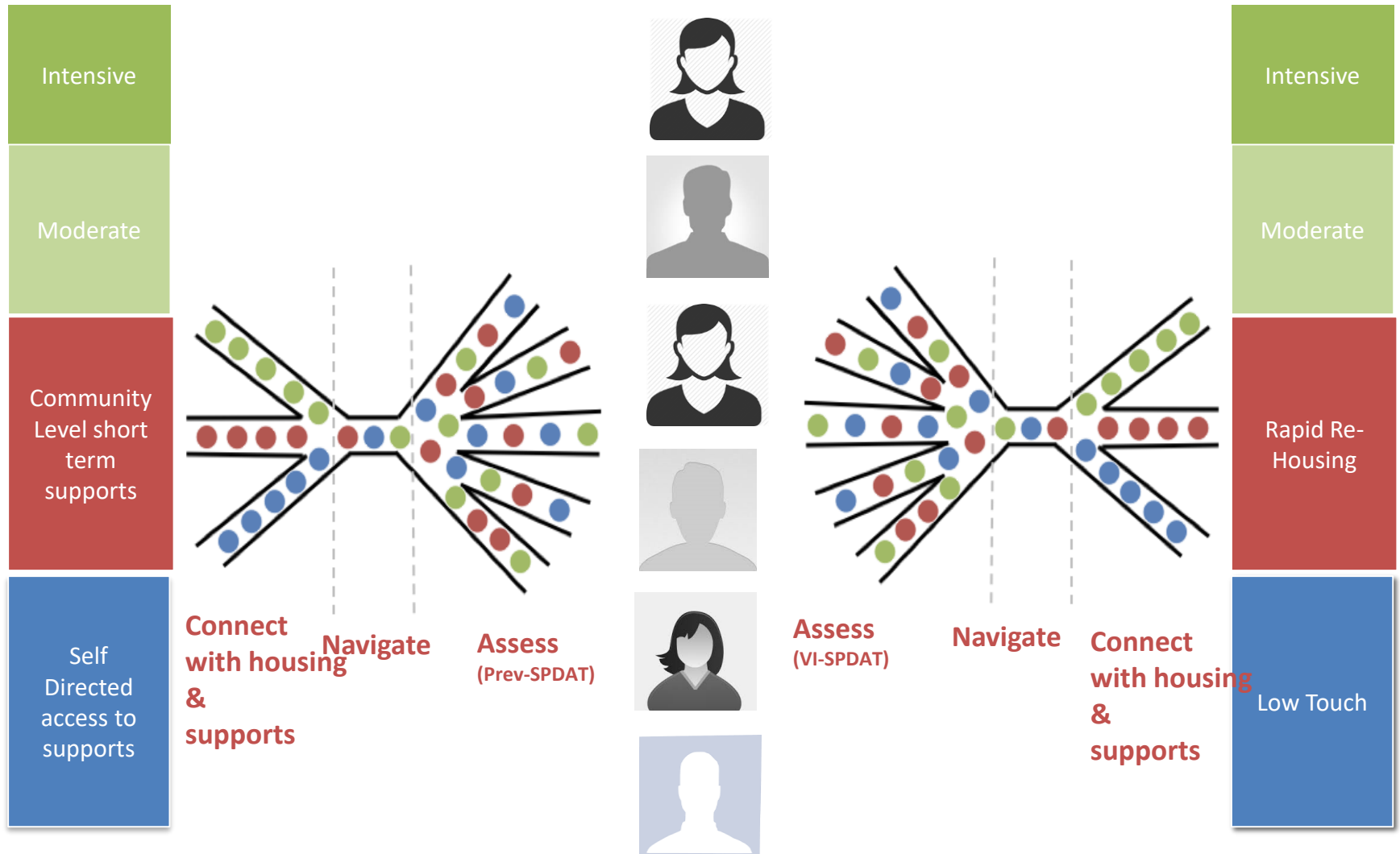
Rapid Re-
Housing
(YES)

7 Abbott
House

Indigenous

All individuals and families experiencing homelessness are screened with the Vulnerability Index–Service Prioritizations Decision Assistance Tool (VI-SPDAT) and directed toward appropriate resources and supports for housing stabilization.

How is your Housing?



What BNLs look like now?

	CKL-H	Northumberland	Ptbo
Enumeration	Registry Week	Registry Week	PiT
HIFIS / HIMS	No	No	Yes!!
By Name List	all known 8+	Some 8+	Some 8+
HCRT	Yes	Yes	Yes
Prioritization	Yes	No	~Yes
Dedicated Housing Resources	Yes	Just started	Yes
In-flow / Out-flow reporting	Only for 8+	No	No
# of people housed	Only for 8+	Yes	Yes