



**20KHomes Campaign Webinar  
Joint PiT/Registry Updates and Q&A  
January 16, 2018**

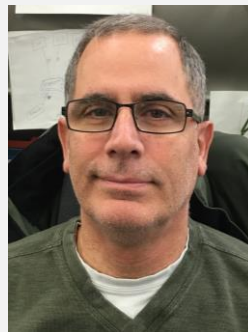
# Presenters & Housekeeping



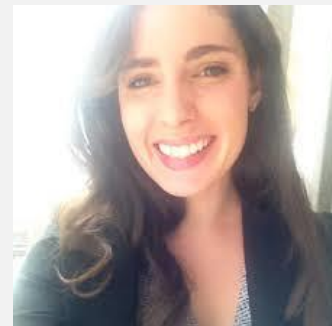
Marie Morrison  
Director, 20KHomes  
CAEH  
[marie@caeh.ca](mailto:marie@caeh.ca)



Patrick Hunter  
Policy Analyst &  
PiT Count Lead with HPS  
[patrick.hunter@hrsdcc-  
rhdcc.gc.ca](mailto:patrick.hunter@hrsdcc-rhdcc.gc.ca)



Henry Dagher  
Manager,  
HIFIS Software  
Development, HPS



Jesse Donaldson  
Senior Strategist &  
National PiT Count  
Coordinator with COH  
[jdonald8@edu.yorku.ca](mailto:jdonald8@edu.yorku.ca)

# Updates from 20KHomes

- Reminder that a [Registry Week Quick Links Document](#) for all things Registry Week has been posted to the Homeless Workspace
- [By-Name List Page](#) on 20KHomes website is continually updated
- Upcoming Webinars:
  - [US Communities Who Have Ended Chronic Homelessness](#) - Feb
  - [Moving from Registry Week to BNL & CAS](#) – March
- [20KHomes Sign-Up for 2018-2020](#)

# Conducting Joint PiT Counts and Registry Weeks in 2018

Patrick Hunter and Henry Dagher  
CAEH Webinar  
January 16, 2018



## Updates

- Report from the training sessions held in November
- Interim report template – deadline extended to February 5
- Small changes are coming to the survey:
  - Modified order
  - Improved wording to some questions
  - Added response options
- Importantly, none of these changes fundamentally change the survey. Instead, they are to improve the process. The revised survey forms will be posted to the Workspace:  
[workspaceonhomelessness.ca/pitcounts](https://workspaceonhomelessness.ca/pitcounts)



## Combined Methodology

### Day 1

PiT Count Day

**Full PiT Count:**  
Sheltered and  
Unsheltered

### Day 2

Continue survey  
(e.g., service  
locations)

Screening for  
**enumeration:** Where  
did you spend the  
night on [DAY 1]?

### Day 3

Continue survey  
(e.g., service  
locations)

Screening for  
**enumeration:** Where  
did you spend the  
night on [DAY 1]?



# HIFIS

- PiT and RW data entry is possible in HIFIS. Records can be linked. Data can be exported for analysis.
- For HIFIS 4 users, you can use mobile data entry. Meaning no need to sit down with a stack of paper surveys after the count.
- HIFIS tallies VI SPDAT (Vulnerability Index) scores automatically.
- Auto-fills your Registry Week Overview



# HIFIS – Local Questions

## PiT Count Event Settings

List
Details

General
COH Questions
Local Questions
Comments

**Number** L02

**Origin**

**English**

How many times have you been at a hospital?

**French**

Combien de fois avez-vous été dans un hôpital?

**List Items (English)**

**List Items (French)**

**7**

**Type of Answer**

Numeric

**Group Name** Henry Test 1

☒ **Active**

###	Question
L02	How many times have you been at a hospital?
L03	Describe your life in a sentence
L04	When did you arrive in this community?
L05	What is your favourite colour?
L06	Which of these words apply to you?
L07	Are you looking for work?

Created By: Dagher, Henry      20-06-2016 11:15:21      Modified By: Dagher, Henry      03-11-2017 16:40:47



# HIFIS – PiT Marketplace

[illegible]

# HIFIS - Registry Week

**PiT Count Event Settings**

List Details

General COH Questions Local Questions Comments

**Community**

Province / Territory: Ontario City: Toronto

**Event Date** 08-04-2017

**Min. Survey Age** 16

☒ **Hidden Homelessness**

☒ **Registry Week**

**Common Assessment Tool**  
VI-SPDAT

Created By: Dagher, Henry 20-06-2016 11:15:21 Modified By: Dagher, Henry 03-11-2017 15:39:47

# 11 Everyone Counts 2018



## Point in Time (PiT) Count Surveys

**Survey #** 0023 **Shift** Generic, Volunteer @ Peel Youth Village From 00:01 to 23:59

**Screening** Core Questions 01-06 Core Questions 07-14 COH Questions C01-C10 Local Questions Comments

**01 Family Members** Yes **Edit** Partner #0454

**02 Homeless at Age...** Age Answered 0

**03 Cumulative Homelessness** Months Answered 0.2 or Days 7

**04 Episodes** Don't Know Count 0

**05 Emergency Shelter Stays** No

**05b Why not?** Turned away (banned) Prefer to stay with friends/Family Pet(s)

**06 How Long in this Community** Length of Time Months 84.0 or Years 7.0 or Days 2,562

**06b Coming From** Country Canada Province / Territory / State British Columbia Community

**06c Why here?** To access Services and Supports

Created By: Dagher, Henry 05-12-2016 17:06:26 Modified By: Dagher, Henry 03-10-2017 10:44:28

**Reports** **Data Exchange**

**Combined PiT/Registry Week**

**Add Client (for VI)**

**Enter VI Survey**

**Link / Unlink**

**COMMUNITY SOLUTIONS**

**Registry Week Overview**

**Exit**



# HIFIS - Registry Week Overview

## Waterloo | REGISTRY WEEK OVERVIEW

### DEMOGRAPHIC & OVERVIEW CANADIAN VI-SPDAT VERSION 2.0 (SINGLE ADULTS)

REGISTRY WEEK & DATA ENTRY DATES	START DATE	END DATE
PIT/Registry Week	31/08/2017	31/08/2017
Data Entry	03/11/2017	03/11/2017

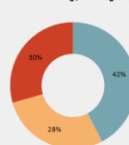
#### TOTAL INTERACTIONS & VI-SPDAT SCORING

	# of people	% (out of total # of interactions)
Total Interactions (people surveyed + refusals/unable to connect/unable to complete survey)	n/a	-%
Total VI-SPDAT Surveys Submitted	833	-%
Total Refusals/Unable to Connect	n/a	-%

#### VI-SPDAT SCORING - HOUSING INTERVENTION BREAKDOWN

VI-SPDAT Scoring Breakdown	# of VI-SPDAT respondents	% (out of ALL VI-SPDATs submitted)
Low Acuity	161	19.3%
Moderate Acuity	36	4.3%
High Acuity	58	7.0%
<b>Total VI-SPDAT Surveys Submitted</b>	<b>833</b>	<b>100.0%</b>

#### VI-SPDAT Scoring / Housing Intervention Breakdown



#### VI-SPDAT DEMOGRAPHICS

	# of VI-SPDAT respondents	% (out of ALL VI-SPDATs submitted)
I. Chronically Homeless (homeless for >= 6 months in the past year)	0	0.0%
II. Episodically Homeless (>= 3 times homeless in the past year)	0	0.0%

- I. Chronically Homeless (homeless for >= 6 months in the past year)
- II. Episodically Homeless (>= 3 times homeless in the past year)
- III. Aboriginal
- IV. Veteran (service in the Military or RCMP)

#### AGE DISTRIBUTION

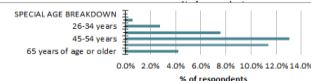
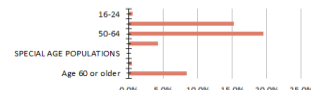
	# of VI-SPDAT respondents	% (out of ALL VI-SPDATs submitted)
16-24	5	0.6%
25-49	127	15.2%
50-64	163	19.6%
65+	35	4.2%

#### SPECIAL AGE POPULATIONS

16-17	4	0.5%
Age 60 or older	70	8.4%

#### SPECIAL AGE BREAKDOWN

	# of VI-SPDAT respondents	% (out of ALL VI-SPDATs submitted)
16-24 years	5	0.6%
25-34 years	23	2.8%
35-44 years	63	7.6%
45-54 years	109	13.1%
55-64 years	95	11.4%
65 years of age or older	35	4.2%



#### CHRONIC & EPISODIC HOMELESSNESS

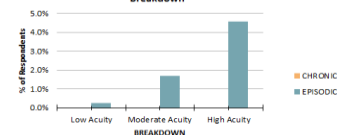
##### CHRONIC HOMELESSNESS (HOMELESS FOR 6 OR MORE MONTHS IN THE PAST YEAR)

	# of VI-SPDAT respondents	% (out of ALL VI-SPDATs submitted)
<b>CHRONIC</b>		
Low Acuity	0	0.0%
Moderate Acuity	0	0.0%
High Acuity	0	0.0%
<b>Chronically Homeless Total</b>	<b>0</b>	<b>0.0%</b>


##### EPISODIC HOMELESSNESS (HOMELESS 3 TIMES OR MORE IN THE PAST YEAR)

	# of VI-SPDAT respondents	% (out of ALL VI-SPDATs submitted)
<b>EPISODIC</b>		
Low Acuity	2	0.2%
Moderate Acuity	14	1.7%
High Acuity	38	4.6%
<b>Episodically Homeless Total</b>	<b>54</b>	<b>6.5%</b>

#### CHRONIC & EPISODIC: VI-SPDAT Score/Housing Intervention Breakdown



# HIFIS 4 – Mobile Data Entry

**HIFIS**  
Homeless Individuals and Families Information System

Front Desk ▾ | PIT Count **7** ▾ | Administration ▾ | Help ▾ | My Account ▾

## PiT Count Event Setting

Pit Event Details

Screening Questions

Core Questions

COH Questions

Local Questions

+ Select COH Questions

+ Add Local Questions

✕ Cancel

### Add PIT Live Survey

Question

2-How old were you the first time you became homeless?

...

-Homeless at Age...

✕ ▾

← Previous

Next →



## HIFIS 4 – Mobile Data Entry

### Test the HIFIS 4 Mobile PiT/Registry Survey

- The HIFIS National Team is seeking your feedback on the draft Mobile Survey functionality.
- Go to [pit.hifis.ca/web](http://pit.hifis.ca/web) throughout January to test and provide feedback - both from a volunteers perspective and a regular HIFIS user perspective.
- All feedback should be directed to [support@hifis.ca](mailto:support@hifis.ca)

## HIFIS Support Desk

- **Comprehensive How To Guides and Reference material are available through the Help Menu of the HIFIS software**
- **The HIFIS Training Centre, a free, on demand e-learning program, and other online resources are available through:**
  - **The HIFIS 4 software**
  - **The HIFIS Web site: [www.hifis.ca](http://www.hifis.ca) (for HIFIS 3)**
- **For questions about the HIFIS software or for Technical Support, contact the HIFIS Support Desk:**
  - **By phone at: [1-866-324-2375](tel:1-866-324-2375)**
  - **By email at: [support@hifis.ca](mailto:support@hifis.ca)**

## Upcoming events

- February 1: **Ask-Me-Anything session** on the Community Workspace on Homelessness
- Late February: **HIFIS PiT Training** Webinar
- Early March: **Town Hall** session





# Thank you!

## PiT Count Resources

**Guide:** <https://www.canada.ca/en/employment-social-development/programs/communities/homelessness/reports/guide-point-in-time-counts.html>

**Toolkit:** <http://homelesshub.ca/pitcounttoolkit>

**Workspace:** [www.workspaceonhomelessness.ca/pitcounts](http://www.workspaceonhomelessness.ca/pitcounts)



# PLANNING FOR YOUR COUNT

Jesse Donaldson, National PiT Count  
Coordinator



canadian  
observatory on  
homelessness

***[www.homelesshub.ca](http://www.homelesshub.ca)***

# YOU MIGHT BE WONDERING....



canadian  
observatory on  
homelessness

***[www.homelesshub.ca](http://www.homelesshub.ca)***

# COMMUNICATION

How should we announce the count in our community?

There's a resource for that!

[PiT Count Toolkit - Before the Count Press Release](#)

*Available on the Community Workspace on Homelessness*



canadian  
observatory on  
homelessness

[\*\*\*www.homelesshub.ca\*\*\*](http://www.homelesshub.ca)

# SURVEY DESIGN

## Where can I find additional survey questions?

There's a resource for that!

[PiT Count Toolkit - Customizable Survey](#)

*Available on the Community Workspace on Homelessness*

[And... Questions based on the Indigenous Definitions of Homelessness are in development. Get in touch for details.]



canadian  
observatory on  
homelessness

[\*\*\*www.homelesshub.ca\*\*\*](http://www.homelesshub.ca)

# HONORARIA

## What should we use for honoraria?

“The Canadian Observatory on Homelessness (COH) recommends that Point-in-Time Count honoraria should have a value of approximately \$5, and should never exceed a value of \$10. Whenever possible, we encourage communities to use cash or gift cards. If you are using items such as granola bars, socks and personal care items instead of or in addition to financial honoraria, we recommend keeping the total value to less than \$20.”

Need more? There's a resource for that!

[Use of Honoraria PiT Counts Discussion Paper](#)

# ADMINISTRATIVE DATA

How do we collect administrative data from shelters?

There's a resource for that!

[PiT Count Toolkit - Shelter Enumeration Form](#)

*Available on the Community Workspace on Homelessness*



canadian  
observatory on  
homelessness

[\*\*www.homelesshub.ca\*\*](http://www.homelesshub.ca)

# VOLUNTEER TRAINING

## How do I recruit and train volunteers?

There are lots of resources for that!

[PiT Count Toolkit - Media Tip Sheet](#)

[PiT Count Toolkit - Registration Form](#)

[PiT Count Toolkit - Volunteer Role Description](#)

*Available on the Community Workspace on Homelessness*

[Check out the “[Volunteer Management](#)” folder for more resources, videos, templates]



canadian  
observatory on  
homelessness

***[www.homelesshub.ca](http://www.homelesshub.ca)***



# CORRECTIONS

**How do we accurately enumerate homelessness within correctional facilities?**

There is no resource for that.

But... we are partnering with St. John's to pilot an improved corrections methodology. If you are interested in learning more about the approach, get in touch.



canadian  
observatory on  
homelessness

***[www.homelesshub.ca](http://www.homelesshub.ca)***

# LGBTQ2S

**How do we collect data on sexual orientation and gender respectfully, safely and accurately?**

There's a resource for that ... soon!

We are working with Dr. Alex Abramovich to publish guidance on building partnerships, training volunteers, and reporting results. In the meantime, please contact me with questions.



canadian  
observatory on  
homelessness

***[www.homelesshub.ca](http://www.homelesshub.ca)***

# ANYTHING ELSE?

**Are there additional resources?**

There's a resource for that!

[PiT Count Toolkit - Resource Directory](#)

*Available on the Community Workspace on Homelessness*



canadian  
observatory on  
homelessness

***[www.homelesshub.ca](http://www.homelesshub.ca)***

# GET IN TOUCH

[jdonald8@edu.yorku.ca](mailto:jdonald8@edu.yorku.ca) or post a question  
on the Community Workspace on  
Homelessness



canadian  
observatory on  
homelessness

***[www.homelesshub.ca](http://www.homelesshub.ca)***

